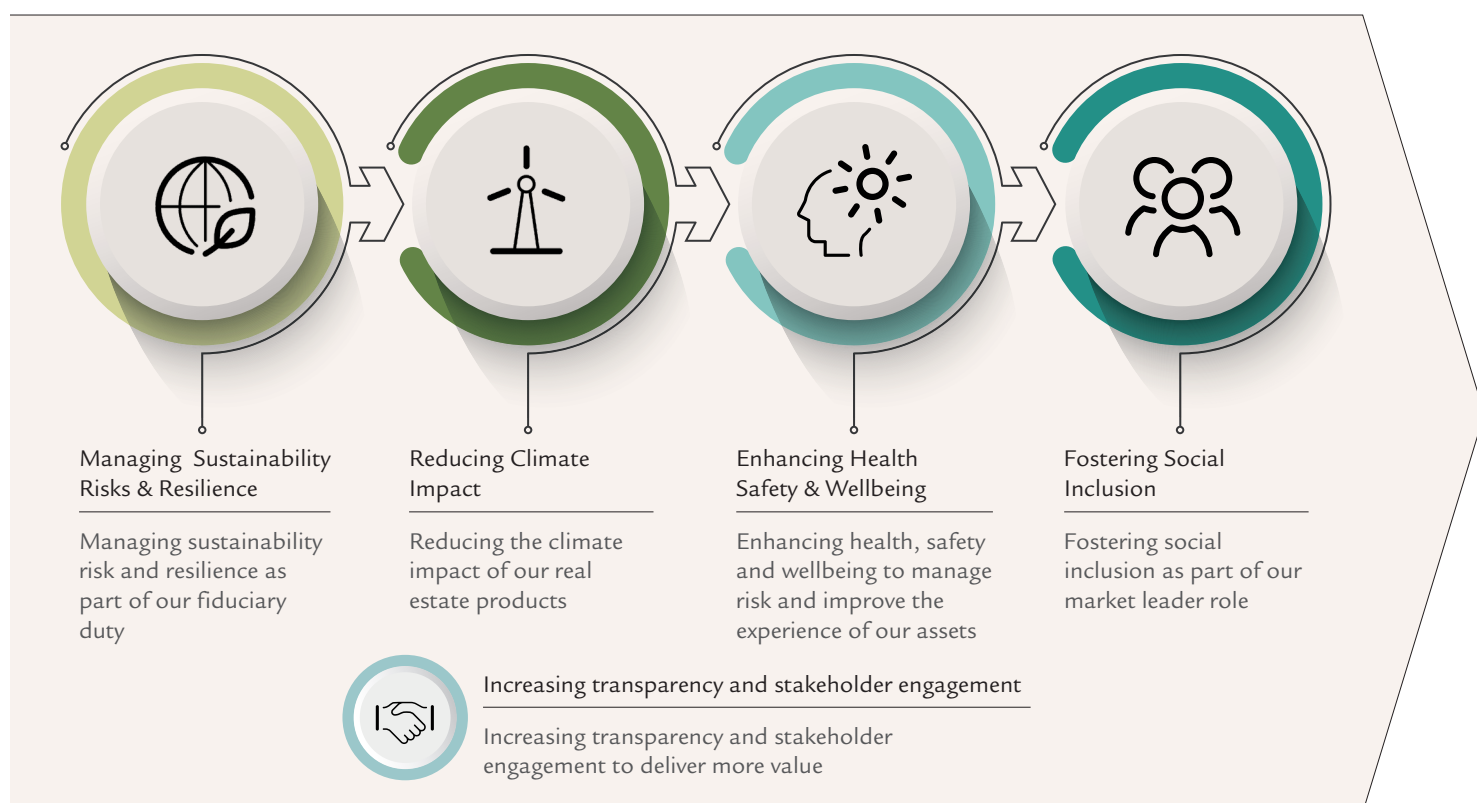


PITCH

Property Income Trust For Charities

A fund managed by
Swiss Life Asset Managers UK

Our approach to ESG



GRESB* track record
Net zero commitment
Solar portfolio review with new solar panel installations
Renewable electricity on landlord managed assets



Social Value Strategy
Tenant satisfaction surveys
Living Wage Accreditation
Wellbeing initiatives



ESG data management system
Annual GRESB Reporting
Annual PITCH ESG Report
BREEAM Green building certifications
PITCH Ethical Policy

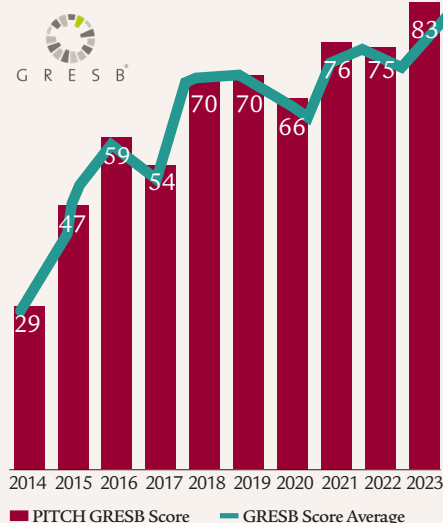
*Global Real Estate Sustainability Benchmark

Industry Initiatives & Memberships

Signatory of:



GRESB Track Record



GRESB Rating



Peer Comparison



United Kingdom of Great Britain
and Northern Ireland
Diversified | Core | Tenant Controlled

Social Value Strategy

We believe in delivering social impact in the places in which we invest. That's why we are focusing our UK social value strategy on uplifting the communities around our assets, delivering tailored impacts that respond to the needs of local communities.

Focus area



Creating healthy, sustainable & inclusive communities in and around our assets



Promoting access to education and skills for underserved groups



Creating an inclusive economy within our value chain and collaborating with our partners to maximise impact

Key delivery mechanism

Initiative focussed

SwissLife
Asset Managers

In partnership with

PITCH
Property Income Trust For Charities

UK COMMUNITY FUND
£20,000
committed to support local community projects and causes in 2023*



We have partnered with South Yorkshire Community Foundation to deliver social value projects in Doncaster.

Swiss Life Asset Managers UK and The Property Income Trust for Charities have each contributed £10,000 to the UK Community Fund to support local community projects in 2023. All donations are paid for separately.

The materials contained herein are for information purposes only and do not constitute an offer to sell or a solicitation of an offer to purchase any interest in any investment vehicles (the "Funds") managed by Swiss Life Asset Managers UK Limited ("Swiss Life Asset Managers UK") or its affiliates. Swiss Life Asset Managers UK is authorised and regulated by the Financial Conduct Authority (the "FCA"). The information contained herein is directed inside and outside the United Kingdom, in accordance with the Alternative Investment Fund Managers Directive 2011/61/EU and any relevant local law in the relevant jurisdictions and it is not directed at any persons in the United States or any other jurisdiction where it would be unlawful to distribute or access this information.

The Funds are not recognised collective investment schemes for the purposes of the Financial Services and Markets Act 2000 of the United Kingdom (the "Act") and are exempt from the restriction in section 238 of the Act on the communication of an invitation or inducement to participate in a collective investment scheme on the grounds that such information is communicated to and/or directed at only those persons who are categorised as professional clients or eligible counterparties (within the meaning of the FCA Rules) in relation to the Funds. The investments and investment services to which this publication relates are only available to persons with such a categorisation and other persons should not act or rely on it. In particular, any investment or investment service to which this publication relates is not intended for persons who are retail clients and will not be made available to retail clients.

Investors in the Funds will not benefit from the rules and regulations made under the Act for the protection of investors, nor from the Financial Services Compensation Scheme. Units in the Funds are not dealt in or on a recognised or designated investment exchange for the purposes of the Act, nor is there a market maker in such units, and it may therefore be difficult for an investor to dispose of his units otherwise than by way of redemption. The performance information (including any expression of opinion or forecast) herein reflects the most-up-to-date data at the time of production and publication made in good faith on the basis of publicly available, proprietary information or on sources believed by Swiss Life Asset Managers UK and its associated companies to be reliable, but not liable, nor guaranteed as to its accuracy or completeness for any such information.

The value of investments may go down as well as up, and investors may not get back all or any amount originally invested. Income or other returns from investments are subject to change and may be lower than estimated. Past performance is not a reliable indicator of future performance. Swiss Life Asset Managers UK manages Funds which invest in real property and which may be subject to higher risk and volatility than other funds and may not be suitable for all investors. Further, the Funds may be leveraged and their portfolios may lack diversification thereby increasing the risk of loss. The levels and bases of and reliefs from taxation may change. Any tax reliefs referred to are those currently available and their value depends on the circumstances of the individual investor. Investors should consult their own tax adviser in order to understand any applicable tax consequences.

Authorised and Regulated by the Financial Conduct Authority
www.pitch-fund.co.uk
Telephone +44 (0)20 7495 1929

Swiss Life Asset Managers UK Limited
55 Wells Street
London W1T 3PT

